

**WESTERN AND SOUTH AUSTRALIAN GARDEN**

INDIGENOUS REVEGETATION AREA

**LEGEND**

- Existing vegetation
- Proposed evergreen / deciduous tree
- Proposed large / medium - sized shrubs
- Proposed small shrubs / groundcovers
- Proposed tufting plants
- Themed garden boundaries

REFER TO LAYOUT PLANS FOR PATH AND FACILITY INFORMATION

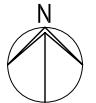
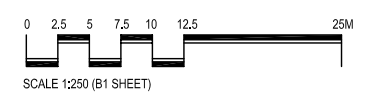
**PLANT SCHEDULE: WESTERN AND SOUTH AUSTRALIAN GARDEN**

KEY	BOTANIC NAME	QTY.
A.a.	ACACIA ACINACEA	16
A.p.	ACACIA PARADOXA	8
A.g.	ADANSONIA GREGORII	3
A.c.	ADENANTHOS CUNEATA	166
A.s.	ADENANTHOS SERICEUS	14
A.f.	AGONIS FLEXUOSA	4
A.fl.	ANIGOZANTHOS FLAVIDUS	40
A.G.V.	ANIGOZANTHUS 'GOLD VELVET'	435
A.h.	ANIGOZANTHOS HUMILIS	40
A.m.	ANIGOZANTHOS MANGLESII	60
A.p.	ANIGOZANTHOS PULCHERRIMUS	48
A.v.	ANIGOZANTHOS VIRIDIS	160
B.a.	BANKSIA ASHBYI	18
B.bl.	BANKSIA BLECHNIFOLIA	60
B.c.	BANKSIA COCCINEA	5
B.h.	BANKSIA HOOKERIANA	4
B.m.	BANKSIA MEDIA	10
B.me.	BANKSIA MENZESII	6
B.p.	BANKSIA PETIOLARIS	40
B.pr.	BANKSIA PRAEMORSA	16
B.r.	BANKSIA REPENS	80
B.s.H.	BANKSIA SPINULOSA 'HONEY POTS'	21
B.spe.	BANKSIA SPECIOSA	8
B.m.	BANKSIA MEDIA	4
B.o.	BANKSIA ORNATA	18
B.sq.	BEAUFORTIA SQUARROSA	6
B.meg.	BORONIA MEGASTIGMA	180
B.I.	BRACHYSCHOME IBERIDIFOLIA	120
B.s.	BURSARIA SPINOSA	19
C.q.D.	CALOTHAMNUS QUADRIFIDUS 'DWARF'	25
C.a.	CHAMELAUCIUM AOROCALDUS	3
C.c.	CORYMBIA CALOPHYLLA	3
C.m.	CHAMELAUCIUM MEGALOPETALUM	20
C.u.	CHAMELAUCIUM UNCINATUM	5
C.ap.	CHRYSOCEPHALUM APICULATUM	405
C.r.	CHRYSOCEPHALUM RAMOSISSIMUM	285
C.s.	CHRYSOCEPHALUM SEMIPAPPOSSUM	385
C.g.	CORREA GLABRA	10
D.c.	DARWINIA CITRIGODORA	5
D.v.	DODONAEA VISCOSA	21
D.n.	DRYANDRA NIVEA	410
E.g.	EREMOPHILA GLABRA	69
E.g.K.	EREMOPHILA GLABRA 'KALBARRI CARPET'	180
E.g.S.	EREMOPHILA GLABRA 'SILVER BALL'	240
E.m.	EREMOPHILA MACULATA	165
E.m.c.	EREMOPHILA MACULATA 'COMPACTA'	1100
E.op.	EREMOPHILA OPPOSITIFOLIA	65
E.ra.	EREMOPHILA RACEMOSA	15
E.sc.	EREMOPHILA SCOPARIA	50
E.we.	EREMOPHILA WELDII	355
E.s.	EUCALYPTUS STOATEI	3
E.sc.	EREMOPHILA SCOPARIA	135
E.c.	EUCALYPTUS CAESIA	11
E.co.	EUCALYPTUS CLADOCALYX	6
E.co.	EUCALYPTUS COSMOPHYLLA	5
E.e.	EUCALYPTUS ERYTHROCORYS	6
E.er.	EUCALYPTUS ERYTHRONEMA	13
E.f.	EUCALYPTUS FORRESTIANA	17
E.go.	EUCALYPTUS GONIOCALYX	4
E.I.	EUCALYPTUS LEUCOXYLON	8
E.le.	EUCALYPTUS LEHMANNII	4
E.ma.	EUCALYPTUS MACRANDRA	11
E.m.	EUCALYPTUS MACROCARPA	4
E.o.	EUCALYPTUS OCCIDENTALIS	3
E.p.	EUCALYPTUS PRESSIANA	9
E.r.	EUCALYPTUS RHODANTHA	3
E.sa.	EUCALYPTUS SALMONOPHLOIA	5
E.st.	EUCALYPTUS STOATEI	5
E.te.	EUCALYPTUS TETRAGONA	4
E.t.	EUCALYPTUS TORQUATA	4
E.to.	EUCALYPTUS 'TORWOOD'	5
E.w.	EUCALYPTUS WOODWARDII	4
E.y.	EUCALYPTUS YOUNGIANA	8
G.o.	GOODENIA OVATA	11
G.o.G.	GREVILLEA OBTUSIFOLIA 'GINGIN GEM'	33

KEY	BOTANIC NAME	QTY.
H.b.	HAKEA BUCCULENTA	12
H.f.	HAKEA FRANCISIANA	7
H.l.	HAKEA LAURINA	14
H.v.	HAKEA VICTORAE	26
H.c.	HARDENBERGIA COMPTONIANA	7
H.d.	HYMENANTHERA DENTATA	10
H.a.	HYPOCALYMMIA ANGSTIFOLIUM	5
I.d.	ISOPOGON DUBIUS	4
I.f.	ISOPOGON FORMOSUS	13
L.I.	LOMANDRA LONGIFOLIA	615
L.c.s.	LOMANDRA LONGIFOLIA 'TANIKA'	770
M.f.	MACROPIDIA FULIGINOSA	40
M.p.	MYOPORUM PARVIFOLIUM	15
N.f.	NUYTSIA FLORIBUNDA	3
P.o.	PATERSONIA OCCIDENTALIS	190
P.I.	POA LABILLARDIERI	4250
P.p.	POA POIFORMIS	1125
P.f.	PIMELEA FERRUGINAE	40
P.ji.	PIMELEA LINIFOLIA	340
P.e.	PLECTRANTHUS ECKLONII	1290
R.c.	RHODANTHE CHLOROCEPHALA	1470
S.a.	SANTALUM ACUMINATUM	4
S.f.	SCHOENIA FILIFOLIA	270
S.fo.	SWAINSONA FORMOSA	190
T.r.	TEMPLETONIA RETUSA	70
T.I.	THEMEDA TRIANDRA	2900
T.m.	THYSANOTUS MULTIFORUS	1080
T.c.	TILLANDSIA CYANEA	1080

**FRAMEWORK PLANTING PLAN (SHEET 7 OF 15)**

**MELTON BOTANIC GARDEN**  
SHIRE OF MELTON



PRINT ISSUE: Report 13-03-09  
Report 15-04-09

REVISIONS: REV A - 14-04-09

Drawn: M. B.

Date: 24-02-09

**Michael Smith and Associates**  
Landscape Architecture and Urban Design  
Office: 1st Floor, 407 Whitehorse Road, Balwyn, 3103  
Postal: 5 Jervis Street, Camberwell, 3124  
Tel: 9830 0414 Fax: 9830 2555

In association with:  
Brecknock Consulting Pty Ltd  
Practical Ecology Pty Ltd  
Traffix Group Pty Ltd  
Paoli Smith Pty Ltd